

DARWIN FESTIVAL

Presented in association with
Museum and Art Gallery of the Northern Territory

erth
Visual & Physical Inc.

PREHISTORIC PICNIC



Thursday 11 – Sunday 14 August 2022

Shows:

10.00am – 11.00am

5.00pm – 6.00pm

Performance Times and Services

Start	Finish	Date	Relaxed	Auslan
10:00am	11:00am	Thursday 11 August	✓	
5:00pm	6:00pm	Thursday 11 August	✓	
10:00am	11:00am	Friday 12 August	✓	
5:00pm	6:00pm	Friday 12 August	✓	
10:00am	11:00am	Saturday 13 August	✓	
5:00pm	6:00pm	Saturday 13 August	✓	
10:00am	11:00am	Sunday 14 August	✓	✓
5:00pm	6:00pm	Sunday 14 August	✓	

Key Performance Information

- The show is one hour long.
- It has two actors and contains puppets of dinosaurs and megafauna.
- It has some loud noises but no flashing lights.
- You can move around the audience space during the show and come and go if you need to.
- There will be a “safe zone” marked out where you can sit, where the puppets and performers won’t come during the show.
- You can bring a blanket to sit on the lawn.
- The lawn is firm but undulates, so may not be suitable for all mobility aids.
- There won’t be BYO chairs, some chairs will be available on request at the gate for people who can’t sit on the ground.
- The nearest toilets are inside the museum, which is an 80m walk from the performance area.
- You can drop people at the performance gate and park close by.
- The carpark is flat and mobility aid accessible.
- There are two dedicated accessibility parking bays
- The café next to the venue will be open 8.30am – 3.30pm each day.
- This is a no smoking and dry event. Please leave your pets at home.
- There is detailed information about the show, puppets and what to expect if you to come to this show in this document.

Prehistoric Picnic is being shown at the Darwin Museum and Art Gallery of the Northern Territory.



Outside on the lawns in front of the building



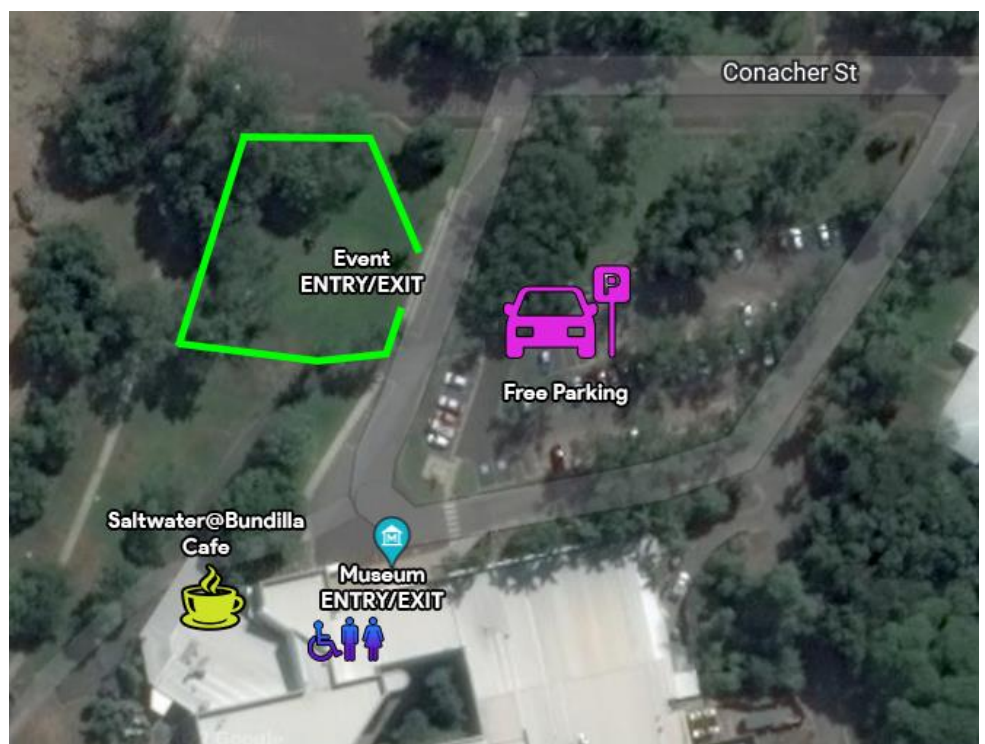
The entrance to the show is between the two Darwin Festival gates on the lawn

You might need to wait in line while your tickets are scanned.

You can choose to sit close to the stage, or in the “safe zone” where the puppets and actors won’t come during the show. The friendly people at the gate will tell you where the safe zone is if you want to go there during the show.

You can leave and come back in at any time during the show if you need.

You can choose to sit on the grass or on a blanket you brought with you.



ERTH'S PREHISTORIC PICNIC SYNOPSIS

Erth's Prehistoric Picnic is a live theatre show with lots of dinosaurs and other prehistoric animals. Some of the dinosaurs are small and cute, and some are very large and scary- looking. But there is nothing dangerous that happens in the show.

The show has 2 hosts – an adult and a 11-year old child, who both talk directly to the audience about the puppets in the show.

There are 4 puppeteers who we get to meet, and they either carry and operate the smaller puppets, or wear a full body-puppet, so that all you can see of them is their legs.

In the play, the 2 hosts share some fun facts and interesting information about each of the dinosaurs, and make some jokes along the way.



The show is outdoors and the audience can sit together in small groups on picnic blankets. There's lots of space and the audience is welcome to get up and move around and talk to each other. Sometimes the hosts invite the audience to come up to the front of the stage area to look more closely at the dinosaurs, and even touch and pat them. At the end of the show, the puppeteers will stick around and you can talk to them and have a chance to touch and feel some of the puppets.

The first dinosaurs to come out in the show are our **baby dinosaurs**: a baby T-Rex and a baby Triceratops. The puppeteers carry these puppets in their hands, and invite children to pat them. They are very cute and friendly.



The next dinosaurs are **Leaellynasaura**. They are about 1 metre tall and look a bit like a small emu or large goose, but with leathery skin like a reptile. The Leaellynasauruses are also very friendly and a little bit cheeky.



Next is the **Australovenator**. As the name suggests, this is an Australian dinosaur, that you might think looks a bit like a T-Rex. This puppet is fully worn by one puppeteer who is inside the body, operating its mouth and eyes, and making it move around and roar. The Australovenator is over 2 metres tall and has sharp-looking teeth, and its roar can sound a bit scary. At one point in the show, it breaks through the stage barrier and runs into the audience. There is a safe zone in the audience where the dinosaurs do not go, so if you think it might be too scary, you can sit here. Although we pretend at times that the dinosaur is fierce and out of control, there is never really any danger. The puppeteer operating this puppet can see through a camera inside the dinosaur, and makes sure nobody gets hurt.



We have some large Meganeura puppets, which are like really big dragonflies. They fly over the crowd on the end of a long pole.



The last big creatures to come out, actually aren't dinosaurs; they are known as megafauna. Their proper name is **Dromornithidae**, but we call them **Thunderbirds**. Each puppet is over 2 metres tall and looks like a large emu or cassowary. It is very gentle and placid, with beautifully coloured feathers that are soft to touch. One puppeteer operates its legs from inside its body. It has a long neck and a large beak on its head – this is operated by a second puppeteer. The Thunderbirds also wander through the crowd to meet audience at the end of the show.



Once the show is over you can leave by using the same gate you came in by.